

THE ROSEN MARKET TIMING LETTER

PRECIOUS METALS - FOREX - STOCK INDICES - COMMODITIES

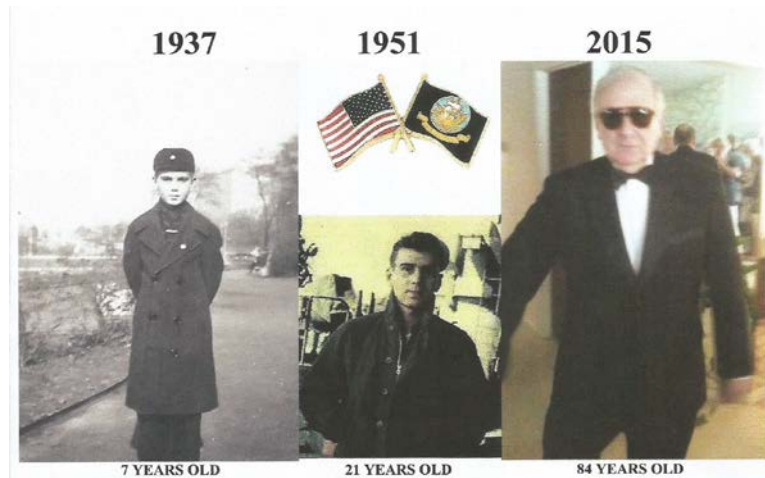
<https://www.deltasociety.com/content/ron-rosen-precious-metals-timing-letter>

RONALD L. ROSEN
December 23, 2015

SEASONAL MESSAGE

Please click here for this SEASONAL MESSAGE.

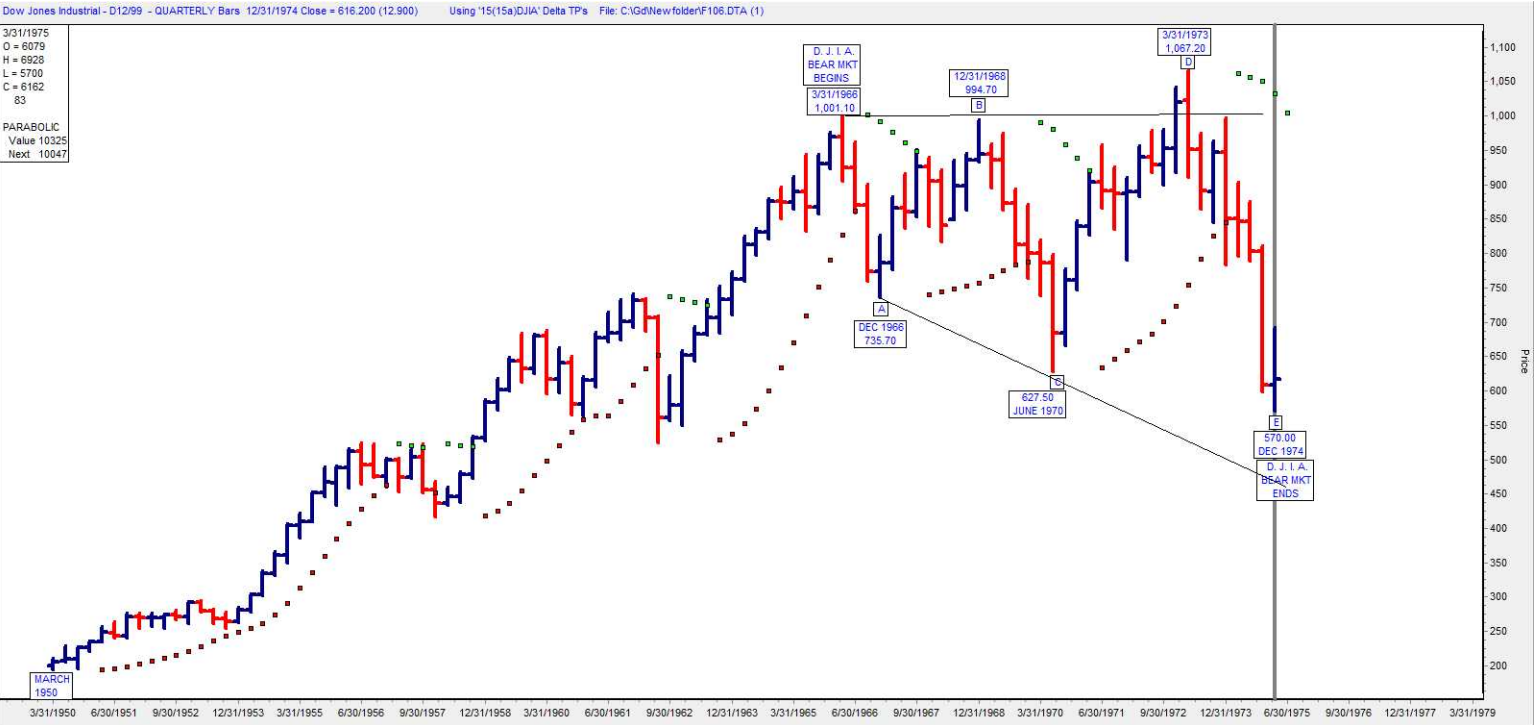
v



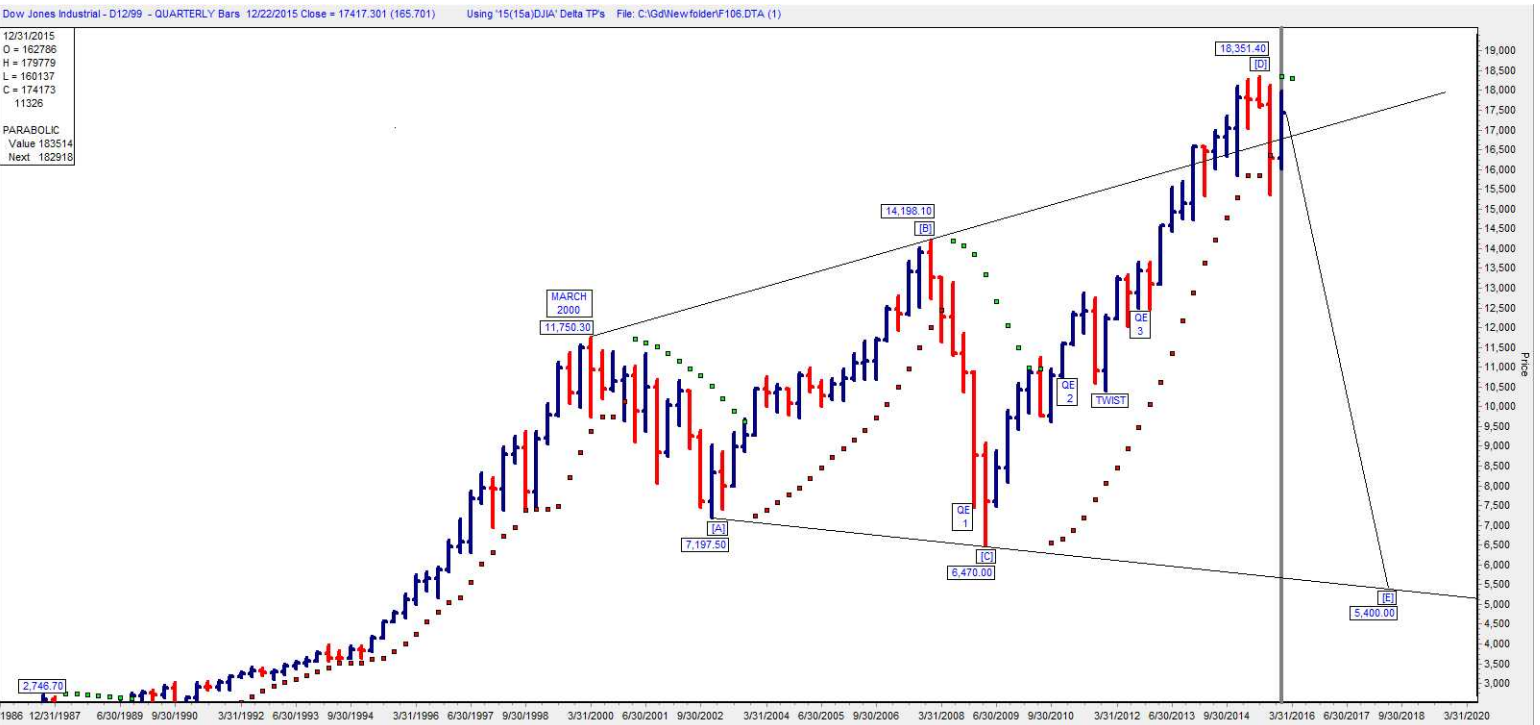
“Wise as serpents, yet innocent as doves”

The quarterly Green Parabolic dots have called every Major Decline since 1950.

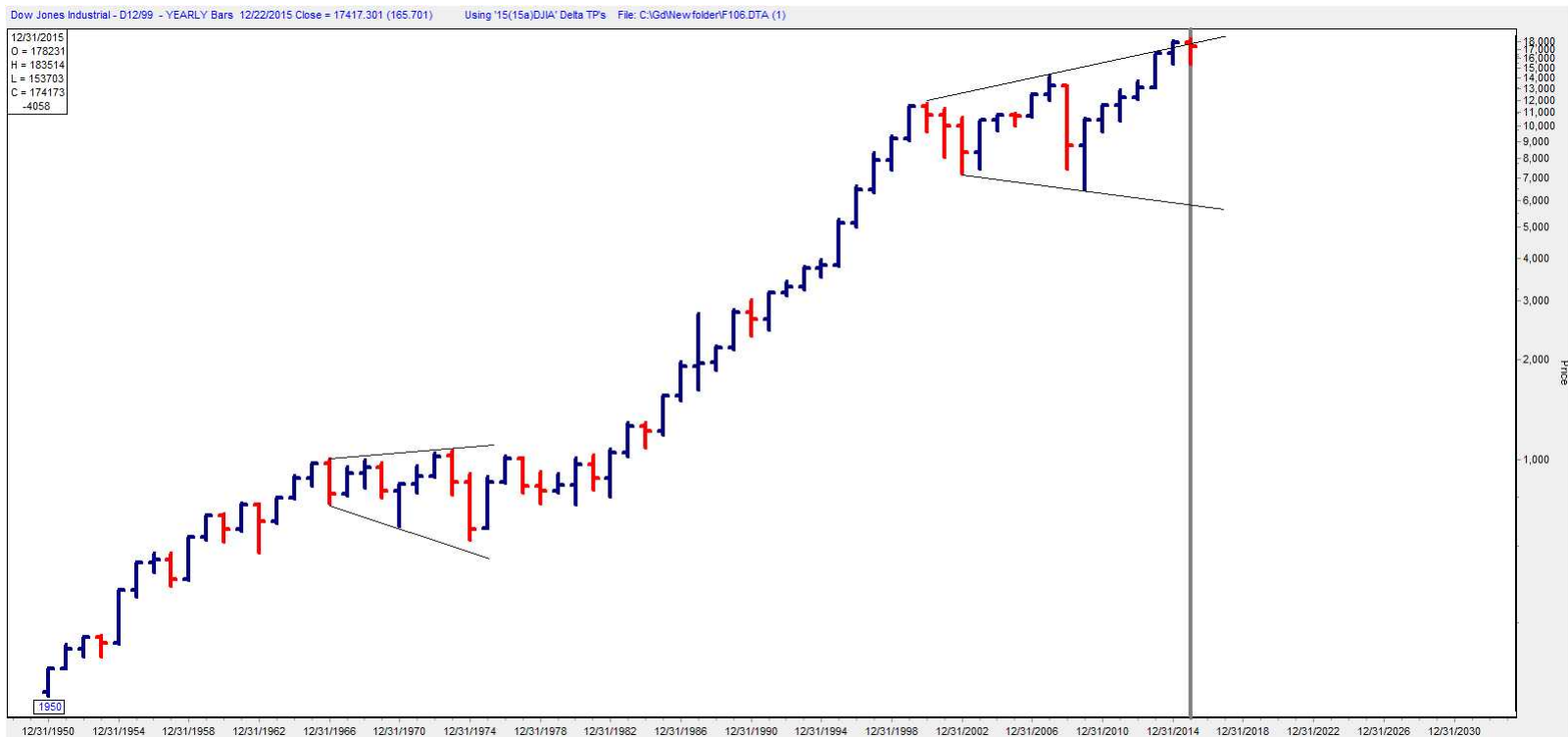
19661974



200020??



DJIA YEARLY LOGARITHMIC



Disclaimer: The contents of this letter represent the opinions of Ronald L. Rosen. Nothing contained herein is intended as investment advice or recommendations for specific investment decisions, and you should not rely on it as such. Ronald L. Rosen is not a registered investment advisor. Information and analysis above are derived from sources and using methods believed to be reliable, but Ronald L. Rosen cannot accept responsibility for any trading losses you may incur as a result of your reliance on this analysis and will not be held liable for the consequence of reliance upon any opinion or statement contained herein or any omission. Individuals should consult with their broker and personal financial advisors before engaging in any trading activities. Do your own due diligence regarding personal investment decisions.