

THE ROSEN MARKET TIMING LETTER

PRECIOUS METALS - FOREX - STOCK INDICES - COMMODITIES

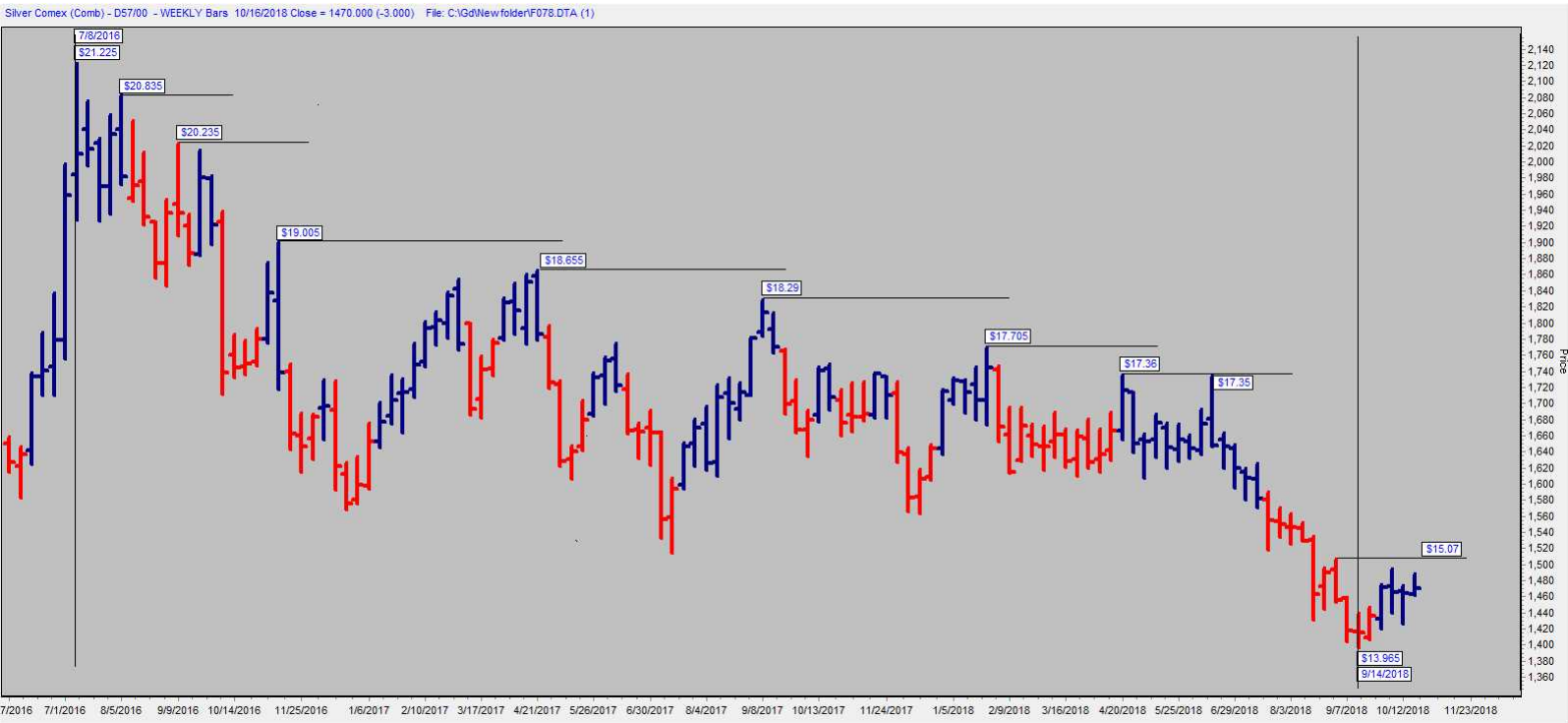
<https://www.deltasociety.com/content/ron-rosen-precious-metals-timing-letter>

RONALD L. ROSEN
October 17, 2018

SILVER

Since the high of \$21.225 in the week of July 8, 2016 silver bullion has consistently made lower peaks right into the week of October 17, 2018. However, ...

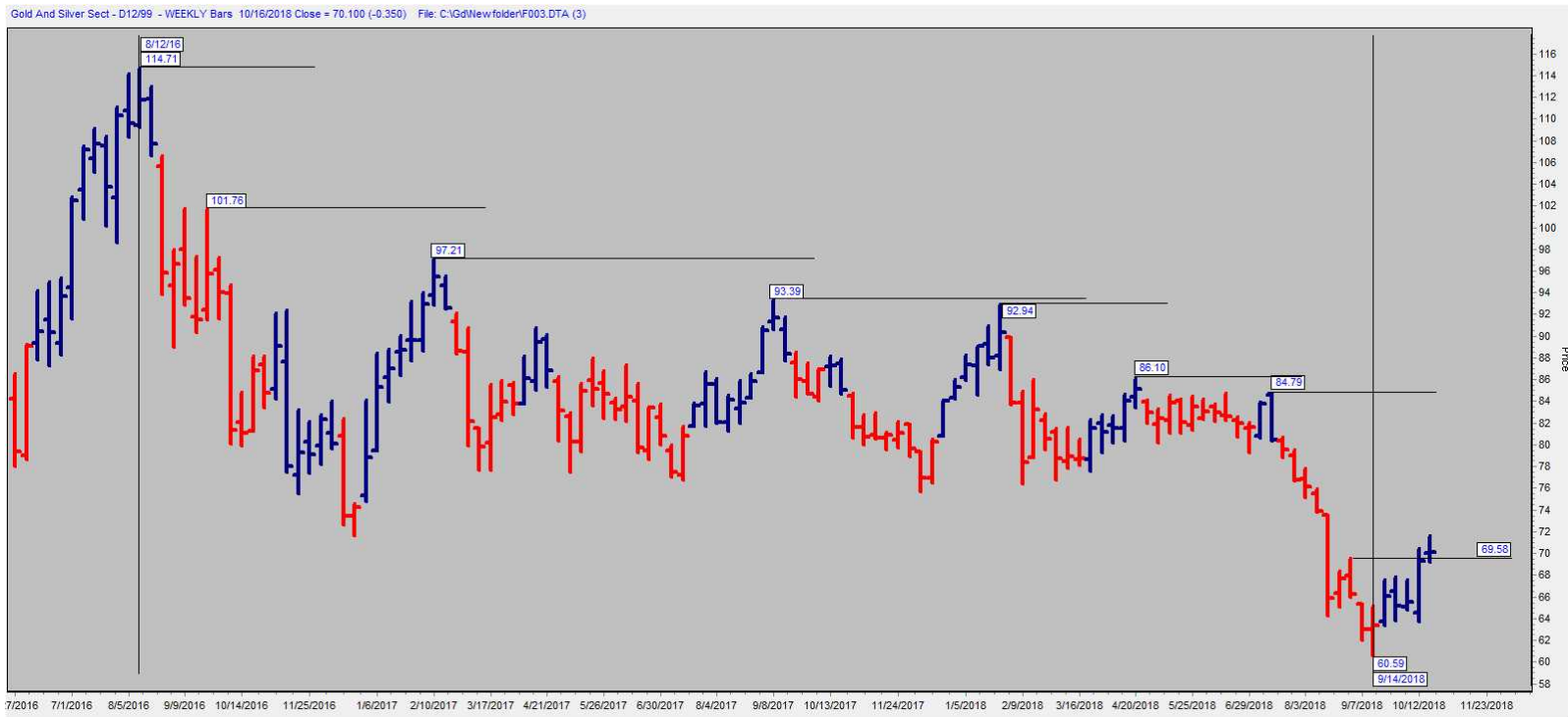
SILVER WEEKLY



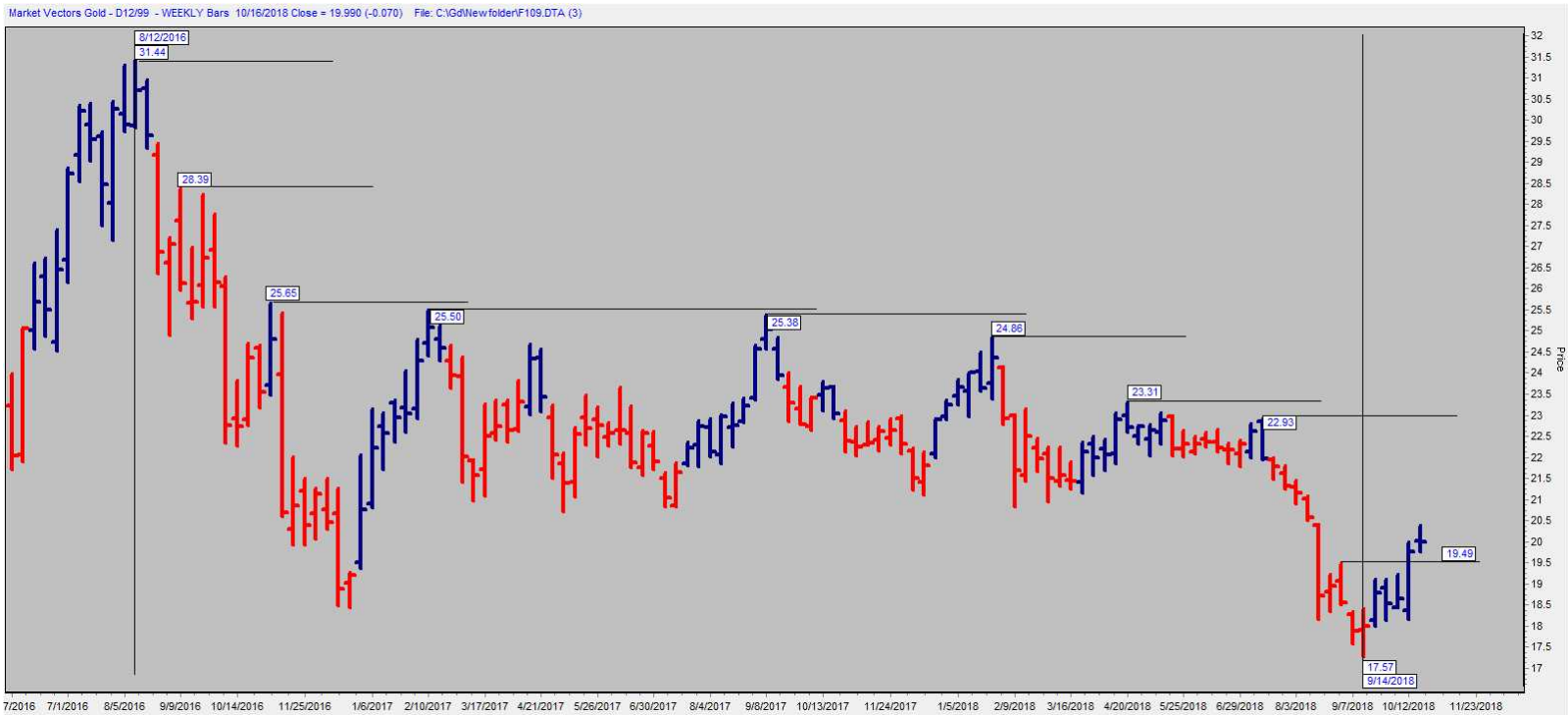
... both the silver and gold shares have closed above their most recent peak. Could this be a sign of the resumption of the bull market in the precious metals complex?

Having started my Wall Street career in the year 1956 this truly Old Timer says, "Yes indeed." There is nothing new about the precious metal shares moving up before the precious metals. All that is required to know that this is happening is the simplest form of technical analysis. No fundamentals, nothing fancy, no degrees of any kind required in order to see who's leading who or what's breaking out first. Just draw a few lines and "Voila" the answer will be yours.

XAU WEEKLY

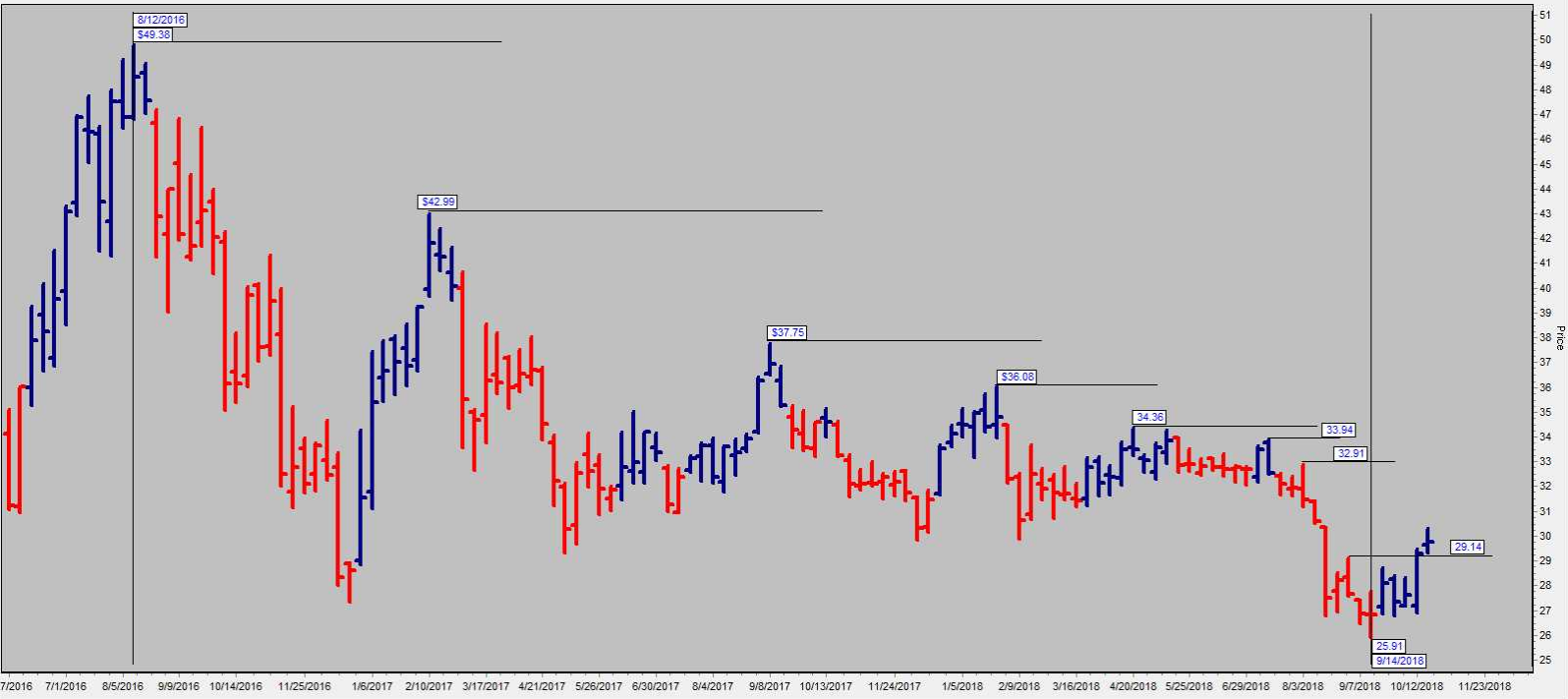


MARKET VECTORS GOLD



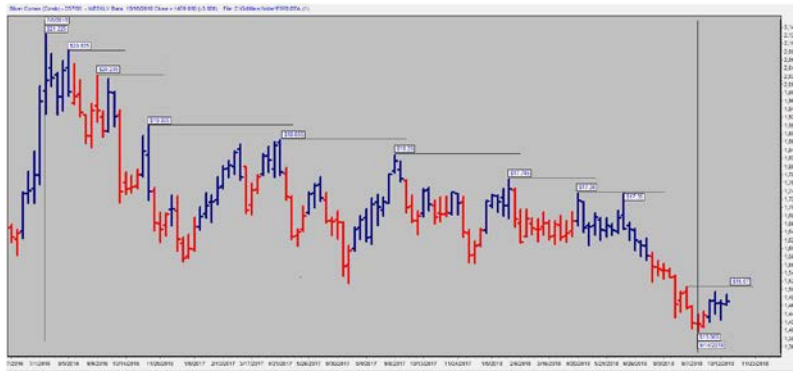
MARKET VECTORS JUNIOR GOLD

Market Vectors Junio - D12/89 - WEEKLY Bars 10/16/2018 Close = 29.740 (-0.050) Using '20(20)GOLD' Delta TP's File: C:\Gd\New folder\F110.DTA (3)



Yes indeed. The shares appear to have a bullish breakout before silver bullion. What does this really mean? The chart on page 6 to the highest probability provides the answer.

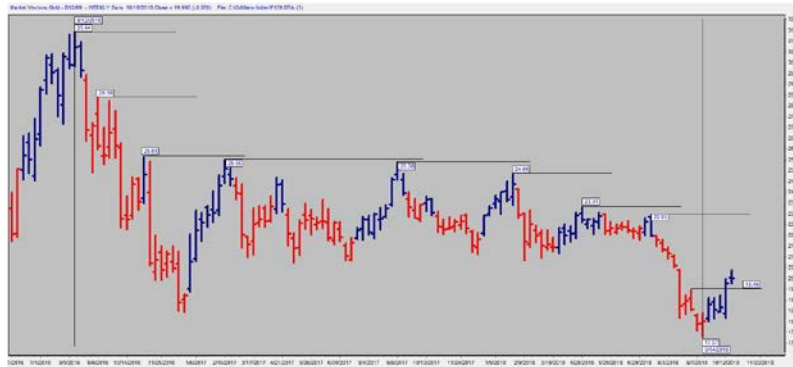
SILVER WEEKLY



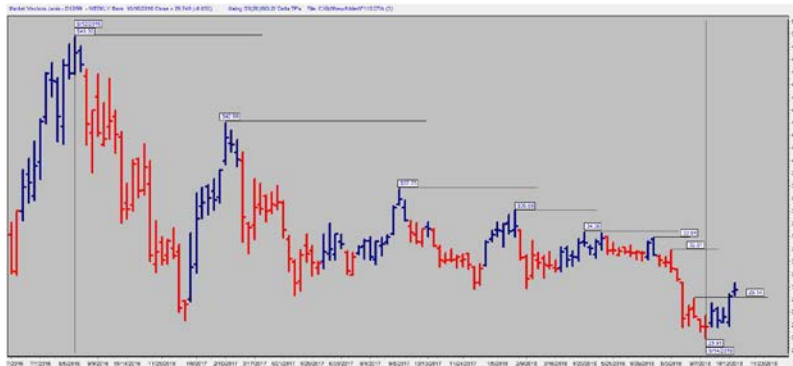
XAU WEEKLY



MARKET VECTORS GOLD



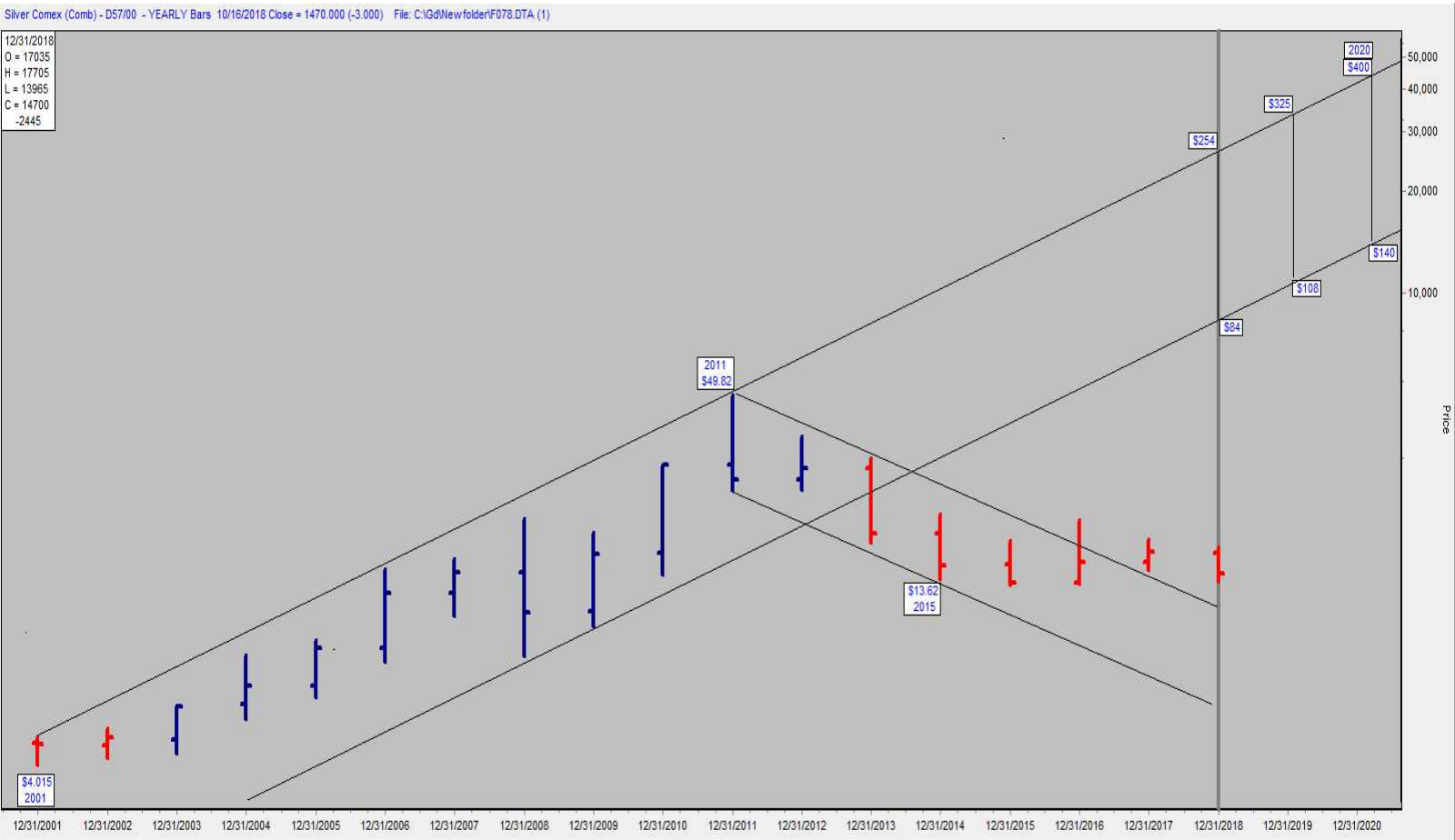
MARKET VECTORS JUNIOR GOLD





Click Here v
<https://youtu.be/mzDVaKRApcc>

SILVER YEARLY LOGARITHMIC



Disclaimer: The contents of this letter represent the opinions of Ronald L. Rosen. Nothing contained herein is intended as investment advice or recommendations for specific investment decisions, and you should not rely on it as such. Ronald L. Rosen is not a registered investment advisor. Information and analysis above are derived from sources and using methods believed to be reliable, but Ronald L. Rosen cannot accept responsibility for any trading losses you may incur as a result of your reliance on this analysis and will not be held liable for the consequence of reliance upon any opinion or statement contained herein or any omission. Individuals should consult with their broker and personal financial advisors before engaging in any trading activities. Do your own due diligence regarding personal investment decisions.